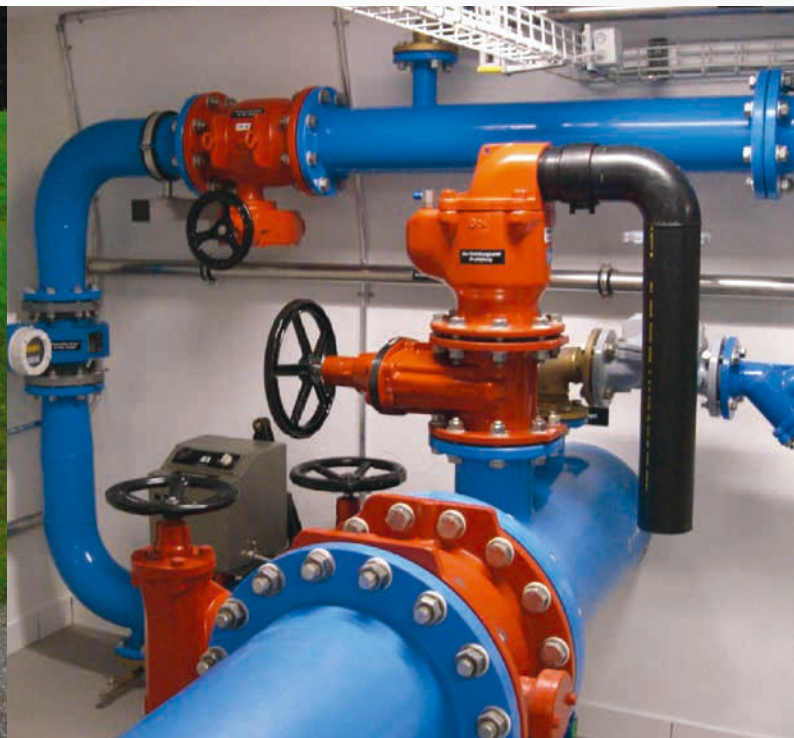




INDUSTRIAL CLEANTECH
ENVIRONMENT
GEOLOGY
CONSTRUCTION
WATER SUPPLY
ENERGY
WASTEWATER
URBAN DRAINAGE
HYDRAULIC ENGINEERING

WE LOVE DRINKING WATER

Drinking water is a vital commodity and the fountain of life. Our teams of experts from various disciplines help to guarantee the availability of sufficient quality water to meet the needs of the population.



AUTOMATION AND CONTROL SYSTEMS

In order to guarantee security of supply and efficient operation and to meet today's demand for high quality potable water, reliable instrumentation and control systems are indispensable components of a modern water supply system.

Our process and electrical engineers provide comprehensive support and advice for clients during the tendering or evaluation process. We also assist our clients during implementation and commissioning and with the long-term optimisation of plants.

CONVEYANCE AND STORAGE

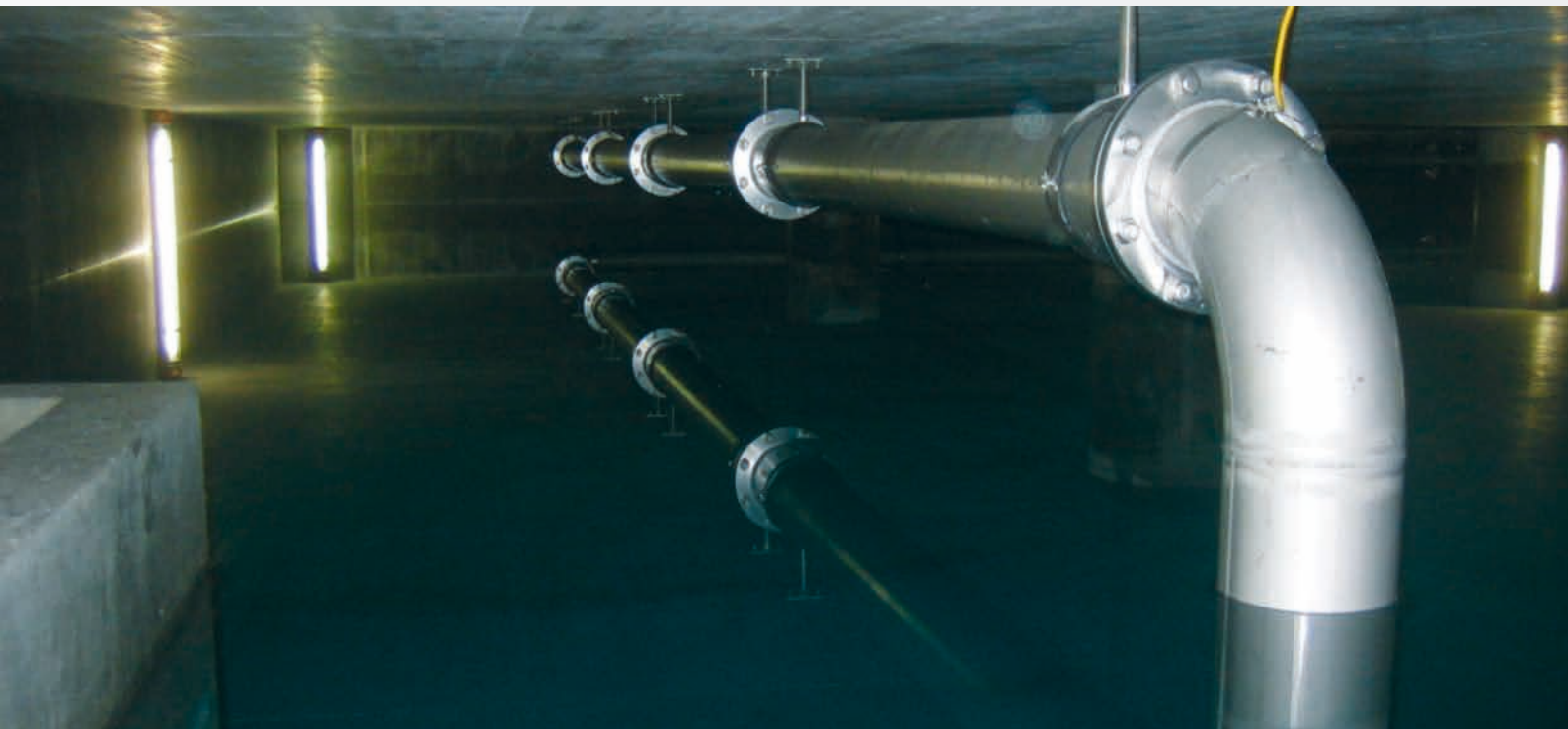
Conveyance and storage are major factors in the water supply system. To guarantee the necessary mains pressure for buildings and fire hydrants, water often has to be pumped to an elevated storage reservoir or tank. This ensures there will be sufficient water pressure and balancing volume to cope with fluctuating daily demands and emergencies.

Our services include the design, construction and renovation of spring catchments, groundwater wells, pumping stations and reservoirs.

DRINKING WATER TREATMENT

To meet the necessary purity standards, 60% of the Swiss drinking water supply undergoes technology-based purification processes.

We have in-depth knowledge of single-stage water treatment processes, like chlorination or UV radiation, and we master complex, multi-stage or combined processes using sand and membrane filtration, ozonization and activated carbon adsorption. The analysis of water samples is carried out in our own laboratories.



MASTER PLANNING The General Water Supply Master Plan defines the present and future supply requirements for drinking water, industrial needs and fire fighting. We forecast public water supply needs decades into the future using the latest simulation programs and modelling tools – to, for example, design water networks.

Our engineers and specialists are reliable partners for every aspect of the General Water Supply Master Plan. And we support you in developing and implementing quality control systems or concepts for emergency water supplies.

SPRING WATER More than 40% of the potable water provided by public utilities in Switzerland stems from natural springs. Quality drinking water depends on the correct spring tapping design and construction. The legislative and practical requirements for protection zones around the collection areas must also be considered.

Our core competences include the design, construction and renovation of spring catchments and well houses. We also advise our clients in defining adequate water protection zones.

WATER SUPPLY NETWORKS If reservoirs are the heart of water supply systems, the water mains are the arteries. To secure long-term potable water supplies and to handle population growth, continual renewal and expansion is necessary.

We design, construct and renovate pressure conduits, water mains and pipes using both conventional trench construction and modern trenchless methods. And we rely on the latest software applications to determine the right pipeline dimensions.

LOCATIONS

SWITZERLAND

HOLINGER AG

CH-5405 Baden
CH-4052 Basel
CH-3006 Berne
CH-6863 Besazio (Mendrisio)
CH-7000 Chur
CH-1024 Ecublens (Lausanne)
CH-8500 Frauenfeld
CH-5070 Frick
CH-6331 Hünenberg (Zug)
CH-8700 Küsnacht (Zurich)
CH-6403 Küsnacht (Schwyz)
CH-4410 Liestal
CH-6005 Lucerne
CH-1920 Martigny
CH-4601 Olten
CH-1950 Sion
CH-8143 Stallikon
CH-3600 Thun
CH-8405 Winterthur
CH-8005 Zurich

SUBSIDIARIES

aqua-System AG

CH-8405 Winterthur

EnerSys Schweiz GmbH

CH-4410 Liestal

ENVILAB AG

CH-4800 Zofingen

IBG AG

CH-8005 Zurich

SWISSWATER GmbH

CH-8005 Zurich

TK Consult AG

CH-8005 Zurich

INTERNATIONAL

HOLINGER International Consultants GmbH

CH-4410 Liestal

HOLINGER Ingenieure GmbH

D-10117 Berlin
D-09116 Chemnitz
D-01309 Dresden
D-20457 Hamburg
D-77756 Hausach
D-79801 Hohentengen a. Hrh.
D-89188 Merklingen
D-54296 Trier

HOLINGER AG Luxembourg

L-5485 Wormeldange-Haut

WETZEL + PARTNER

Ingenieurgesellschaft mbH

D-47447 Moers

CONTACT

For all HOLINGER and subsidiary contact information
please visit our homepage: www.holinger.com